

# **Alliance Bank Building**

**Professional Office Space Available**



- ◆ Suite 200A - 1400 SF
- ◆ Easy Access from a signalized intersection at Main Street & Hastings Way
- ◆ Join Alliance Bank, Goldridge Companies, Hoefft Builders, State Farm, Anthem, and more
- ◆ Parking ramp for ample staff and client parking

**Mid States  
Development, Inc.**  
475 Chippewa Mall Dr., Ste. 335  
Chippewa Falls, WI 54729



**Contact::**

**DAVID SANDERS**  
**715-723-2223 ext 12**

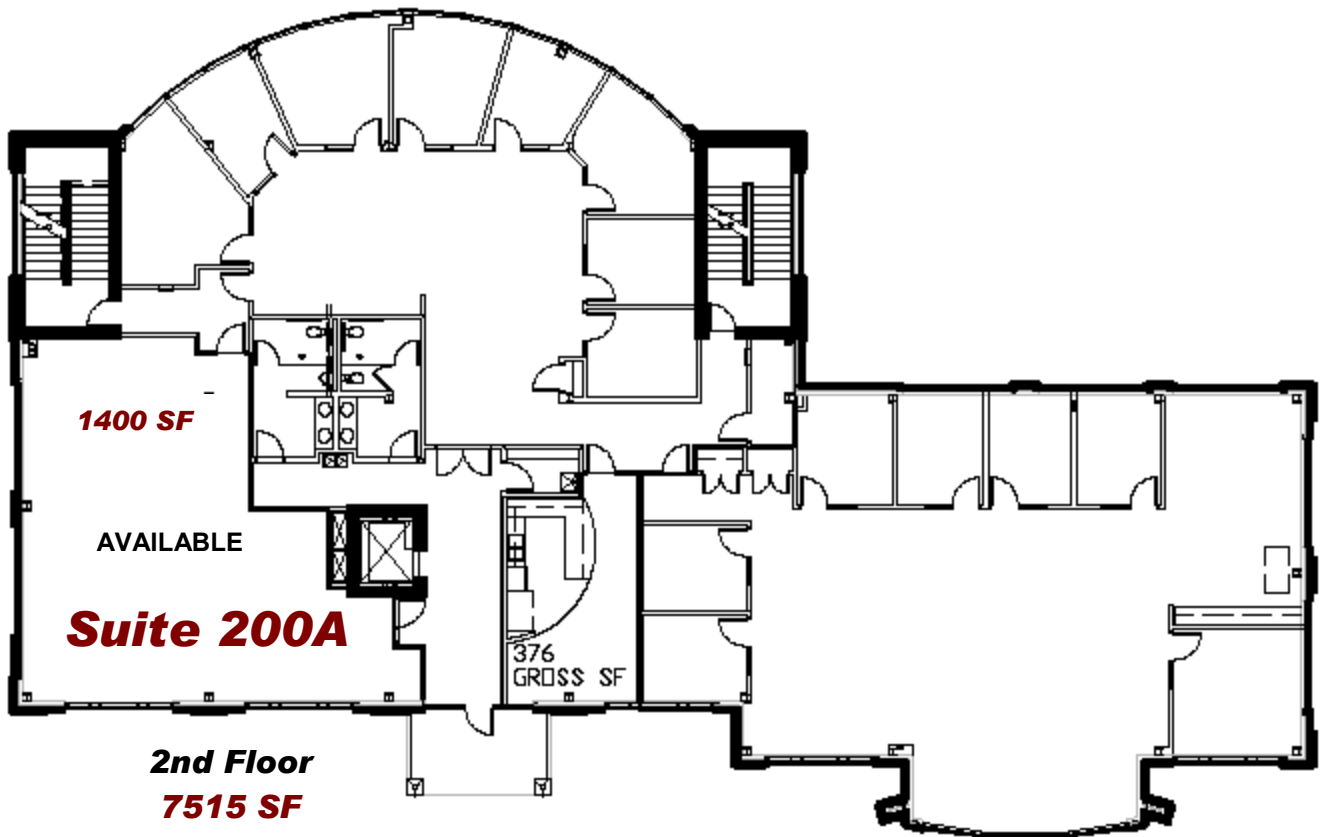
[dsanders@midstatesdevelopment.com](mailto:dsanders@midstatesdevelopment.com)

*"Your Commercial Real Estate Specialists"*

[www.midstatesdevelopment.com](http://www.midstatesdevelopment.com)

# **Alliance Bank Building**

## **Second Floor**



### **Contact::**

**DAVID SANDERS**

**715-723-2223 ext 12**

[dsanders@midstatesdevelopment.com](mailto:dsanders@midstatesdevelopment.com)