

FOR LEASE

OFFICE SPACE AVAILABLE

714 South Barstow, Eau Claire, Wisconsin

Approximately
1,200 SF



- Approximately 1,200 Square Feet For Lease on Main Level
- Lower Level Available For Storage/Additional Offices
- Highly Visible with Street Signage
- Off Street Parking
- Competitive Rates/Build To Suit

**Mid States
Development, Inc.**

475 Chippewa Mall Dr., Ste. 335
Chippewa Falls, WI 54729



Contact::

DAVID SANDERS

715-723-2223 ext 12

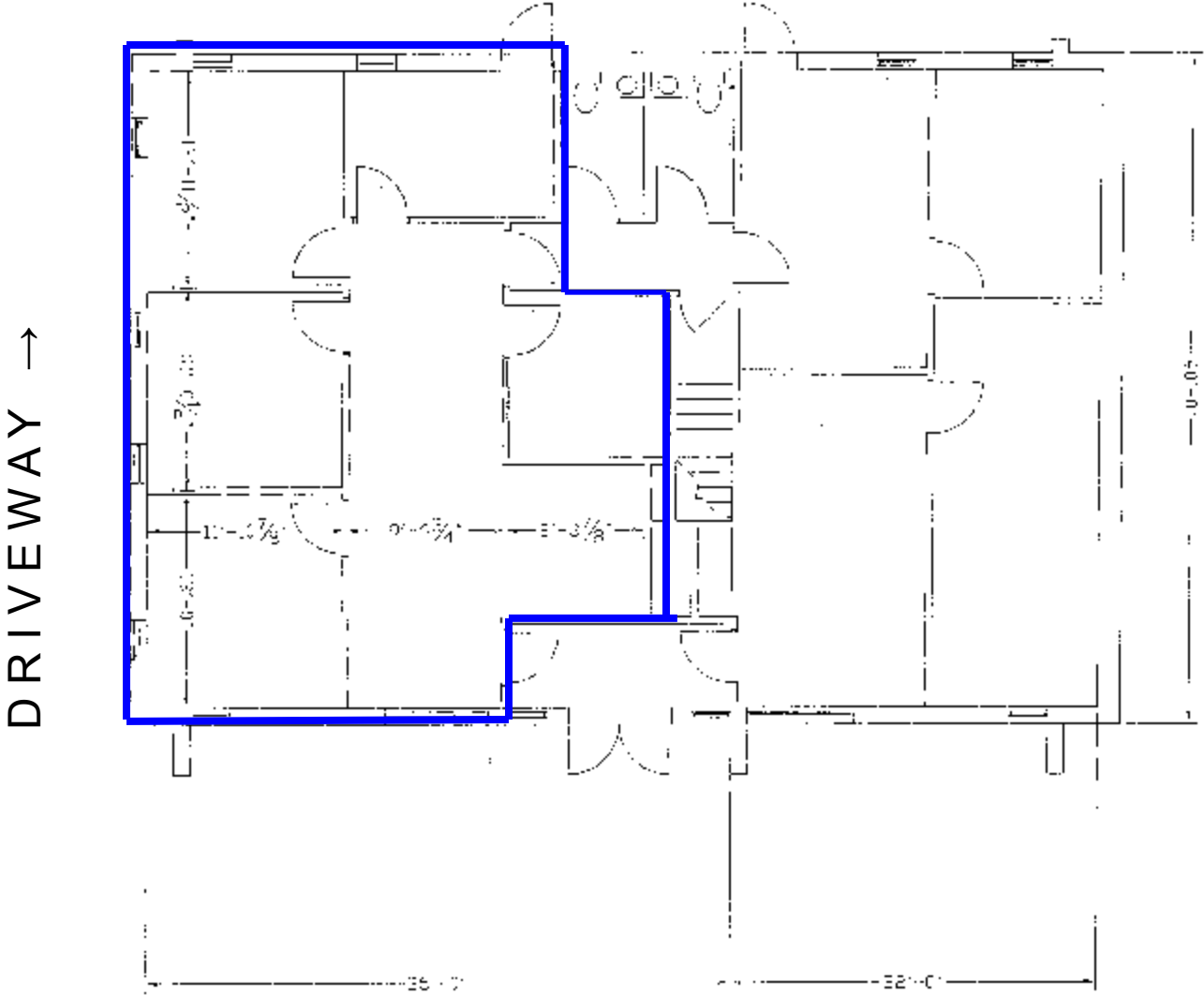
dsanders@midstatesdevelopment.com

"Your Commercial Real Estate Specialists"

www.midstatesdevelopment.com

Building Floor Plan

OFF-STREET PARKING
-BACK OF BUILDING



DRIVEWAY →

← South Barstow →



dsanders@midstatesdevelopment.com