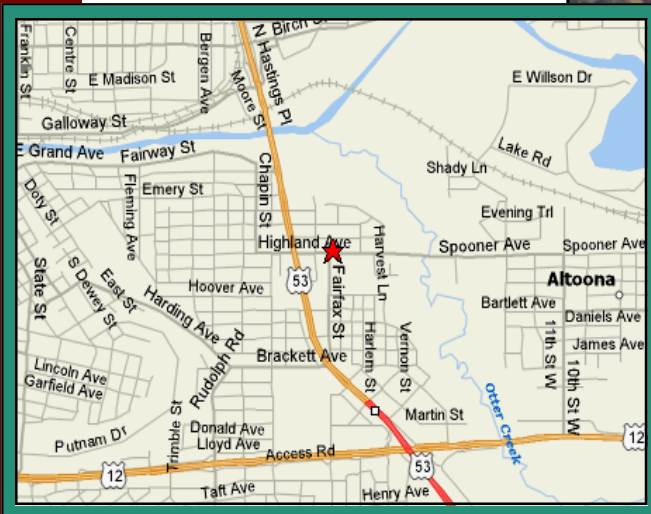


# STERLING BUILDING

## SPOONER AVENUE - ATLOONA, WISCONSIN

### AVAILABLE SPACE FOR LEASE



**Convenient Location!**



**Aerial View of Building**

**MID STATES DEVELOPMENT, INC.**  
475 Chippewa Mall Drive, Ste 335  
Chippewa Falls, WI 54729



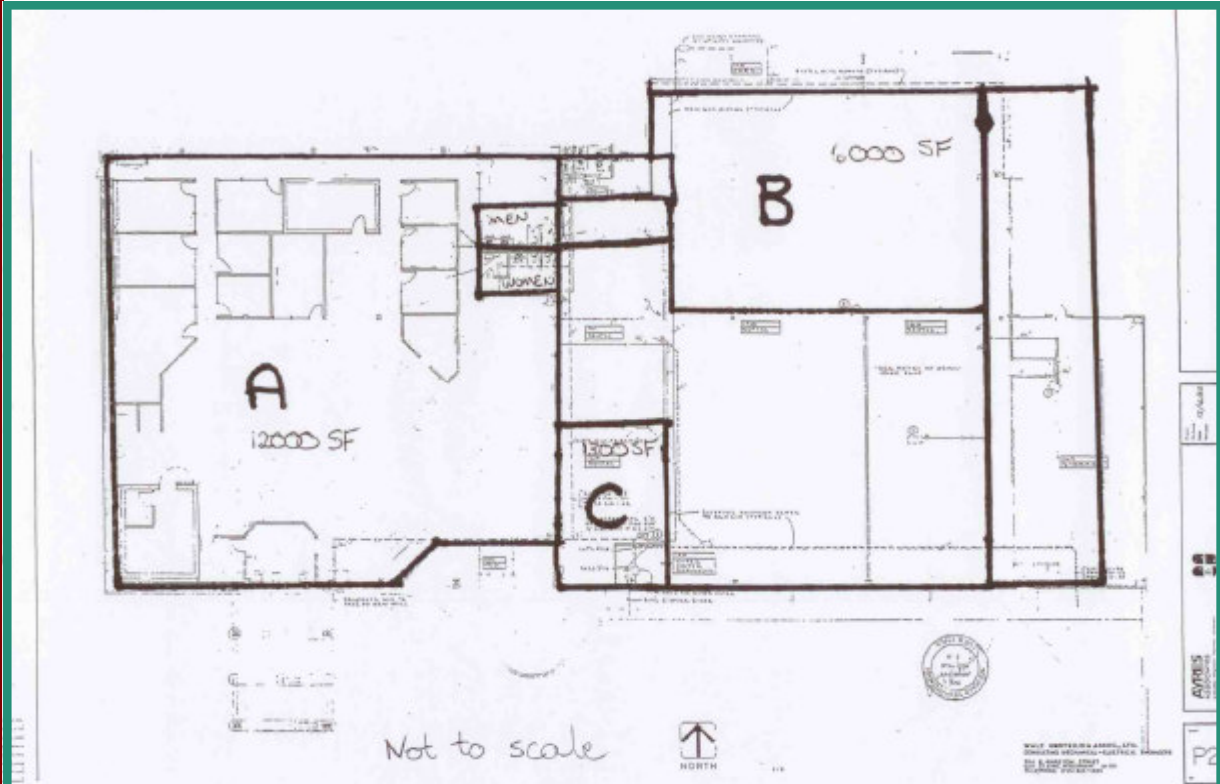
**"Your Commercial Real Estate Specialists"**

Tel. 715-723-2223

Fax. 715-723-3390

[www.midstatesdevelopment.com](http://www.midstatesdevelopment.com)

## Floor plan of Building



~Easy Access at Signalized Intersection~

~Great Location on Major Roadway between Eau Claire and Altoona~

~Ample Parking in Private Lot~

Convenient Location near Restaurants, Convenience Stores and Much More!

### AREA DEMOGRAPHICS:

2005 Estimated Population	79,345 w/in 5 mile radius
2010 Projected Population	81,320 w/in 5 mile radius
<b>Demographic Retail Trade Potential</b>	<b>w/in 3 mile radius</b>
Apparel & Accessory Stores	\$48,002,632
Eating & Drinking Establishments	\$92,457,276
Furniture/Home Furnishings	\$14,829,445
Appliance, Radio, TV Stores	\$16,920,067

**MID STATES DEVELOPMENT, INC.**  
475 Chippewa Mall Drive, Ste 335  
Chippewa Falls, WI 54729



"Your Commercial Real Estate Specialists"

Tel. 715-723-2223

Fax. 715-723-3390

[www.midstatesdevelopment.com](http://www.midstatesdevelopment.com)